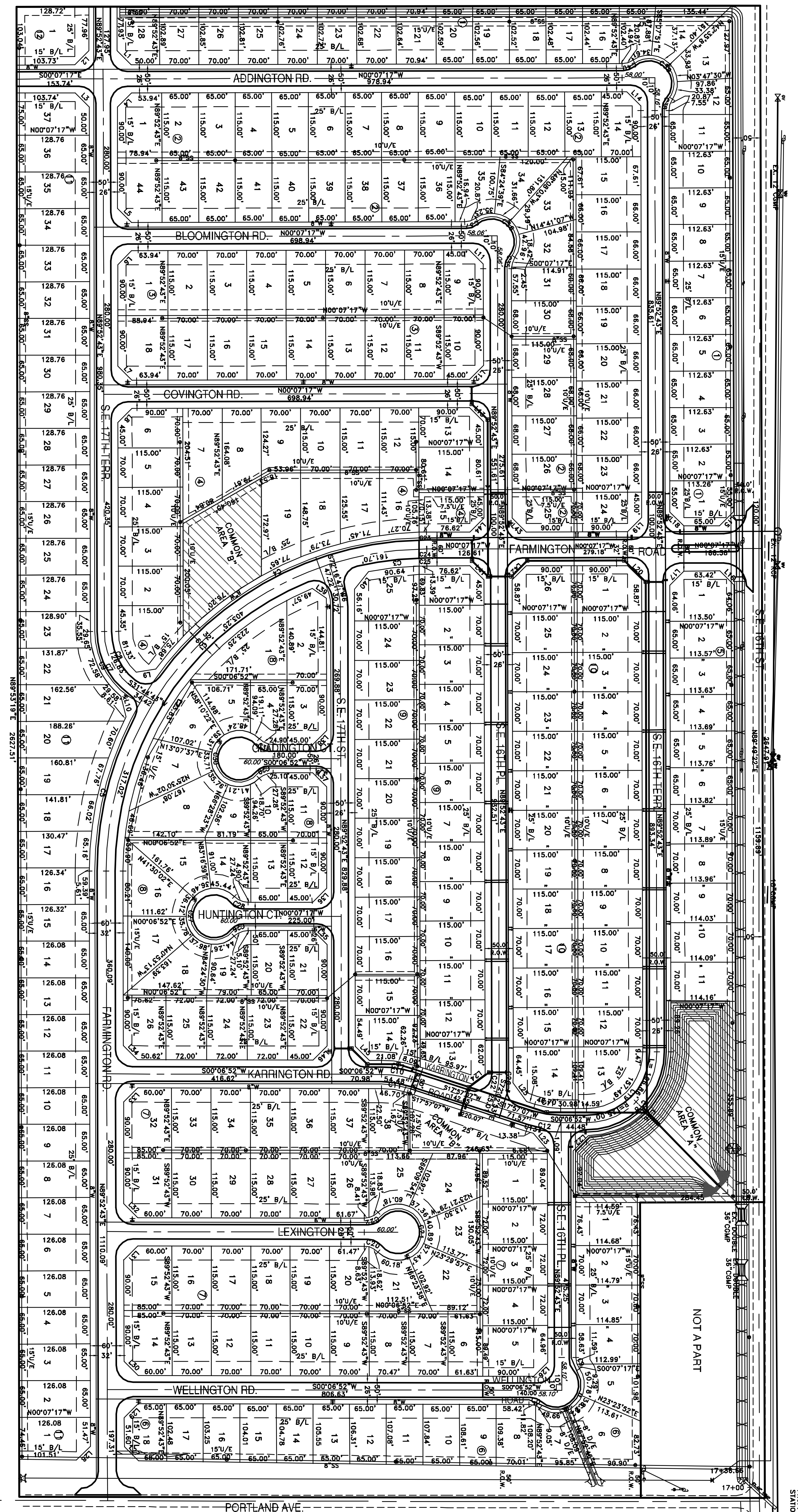


**PRELIMINARY PLAT**  
 TO SERVE  
**FARMINGTON ADDITION**  
 BEING A PART OF THE NE/4, SEC. 26-T9N-R4W, I.M.  
 CITY OF NEWCASTLE, MCCLEAIN COUNTY, OKLAHOMA

**THE CITY**  
 OF  
**NEWCASTLE**



LEGAL DESCRIPTION  
 FARMINGTON ADDITION (RICHEY PROPERTY)  
 NEWCASTLE, OKLAHOMA

A TRACT OF LAND LOCATED IN THE NORTHEAST QUARTER (NE/4) OF SECTION 26, TOWNSHIP 9 NORTH, RANGE 4 WEST OF THE INDIAN MERIDIAN, MCCLEAIN COUNTY, OKLAHOMA BEING MORE PARTICULARLY DESCRIBED AS FOLLOWS:

COMMENCING AT THE NORTHEAST CORNER OF THE NORTHEAST QUARTER OF SAID SECTION 26, THENCE S 00°47'23" W, ALONG THE EAST LINE OF SAID NORTHEAST QUARTER, A DISTANCE OF 219.89 FEET TO THE POINT OF BEGINNING;

THENCE, CONTINUING S 00°47'23" W, ALONG THE EAST LINE OF SAID NORTHEAST QUARTER, A DISTANCE OF 1103.41 FEET;

THENCE, S 89°53'19" W, A DISTANCE OF 2827.51 FEET;

THENCE, N 00°05'13" W, A DISTANCE OF 1320.10 FEET, TO A POINT ON THE NORTH LINE OF SAID NORTHEAST QUARTER;

THENCE, N 89°49'22" E, ALONG THE NORTH LINE OF SAID NORTHEAST QUARTER, A DISTANCE OF 2122.75 FEET;

THENCE, S 00°12'55" E, A DISTANCE OF 219.88 FEET;

THENCE, N 89°49'22" E, A DISTANCE OF 521.15 FEET, TO THE POINT OF BEGINNING.

SAID TRACT CONTAINING 77.39 ACRES, MORE OR LESS, AND SUBJECT TO ALL EASEMENTS OF RECORD.

LINE TABLE

| LINE | LENGTH | BEARING     |
|------|--------|-------------|
| L1   | 35.36  | N43°23'47"E |
| L2   | 35.36  | N43°23'47"E |
| L3   | 35.36  | N43°23'47"E |
| L4   | 35.36  | N43°23'47"E |
| L5   | 35.36  | N43°23'47"E |
| L6   | 35.36  | N43°23'47"E |
| L7   | 35.36  | N43°23'47"E |
| L8   | 35.36  | N43°23'47"E |
| L9   | 35.36  | N43°23'47"E |
| L10  | 35.36  | N43°23'47"E |
| L11  | 35.36  | N43°23'47"E |
| L12  | 35.36  | N43°23'47"E |
| L13  | 35.36  | N43°23'47"E |
| L14  | 35.36  | N43°23'47"E |
| L15  | 35.36  | N43°23'47"E |
| L16  | 35.36  | N43°23'47"E |
| L17  | 35.36  | N43°23'47"E |
| L18  | 35.36  | N43°23'47"E |
| L19  | 35.36  | N43°23'47"E |
| L20  | 35.36  | N43°23'47"E |
| L21  | 35.36  | N43°23'47"E |
| L22  | 35.36  | N43°23'47"E |
| L23  | 35.36  | N43°23'47"E |
| L24  | 35.36  | N43°23'47"E |
| L25  | 35.36  | N43°23'47"E |
| L26  | 35.36  | N43°23'47"E |
| L27  | 35.36  | N43°23'47"E |
| L28  | 35.36  | N43°23'47"E |
| L29  | 35.36  | N43°23'47"E |
| L30  | 35.36  | N43°23'47"E |
| L31  | 35.36  | N43°23'47"E |
| L32  | 35.36  | N43°23'47"E |
| L33  | 35.36  | N43°23'47"E |
| L34  | 35.36  | N43°23'47"E |
| L35  | 35.36  | N43°23'47"E |
| L36  | 35.36  | N43°23'47"E |
| L37  | 35.36  | N43°23'47"E |
| L38  | 35.36  | N43°23'47"E |
| L39  | 35.36  | N43°23'47"E |
| L40  | 35.36  | N43°23'47"E |
| L41  | 35.36  | N43°23'47"E |
| L42  | 35.36  | N43°23'47"E |
| L43  | 35.36  | N43°23'47"E |
| L44  | 35.36  | N43°23'47"E |
| L45  | 35.36  | N43°23'47"E |
| L46  | 35.36  | N43°23'47"E |

CURVE TABLE

| CHORD LENGTH | RADIUS | CHORD BEARING | CHORD DISTANCE | CHORD LENGTH |
|--------------|--------|---------------|----------------|--------------|
| C1           | 20.87  | 30.00         | 187.8402°      | 10.77        |
| C2           | 20.87  | 30.00         | 187.8402°      | 10.77        |
| C3           | 20.87  | 30.00         | 187.8402°      | 10.77        |
| C4           | 20.87  | 30.00         | 187.8402°      | 10.77        |
| C5           | 20.87  | 30.00         | 187.8402°      | 10.77        |
| C6           | 20.87  | 30.00         | 187.8402°      | 10.77        |
| C7           | 20.87  | 30.00         | 187.8402°      | 10.77        |
| C8           | 20.87  | 30.00         | 187.8402°      | 10.77        |
| C9           | 20.87  | 30.00         | 187.8402°      | 10.77        |
| C10          | 20.87  | 30.00         | 187.8402°      | 10.77        |
| C11          | 20.87  | 30.00         | 187.8402°      | 10.77        |
| C12          | 20.87  | 30.00         | 187.8402°      | 10.77        |
| C13          | 20.87  | 30.00         | 187.8402°      | 10.77        |
| C14          | 20.87  | 30.00         | 187.8402°      | 10.77        |
| C15          | 20.87  | 30.00         | 187.8402°      | 10.77        |
| C16          | 20.87  | 30.00         | 187.8402°      | 10.77        |
| C17          | 20.87  | 30.00         | 187.8402°      | 10.77        |
| C18          | 20.87  | 30.00         | 187.8402°      | 10.77        |
| C19          | 20.87  | 30.00         | 187.8402°      | 10.77        |
| C20          | 20.87  | 30.00         | 187.8402°      | 10.77        |
| C21          | 20.87  | 30.00         | 187.8402°      | 10.77        |
| C22          | 20.87  | 30.00         | 187.8402°      | 10.77        |
| C23          | 20.87  | 30.00         | 187.8402°      | 10.77        |
| C24          | 20.87  | 30.00         | 187.8402°      | 10.77        |
| C25          | 20.87  | 30.00         | 187.8402°      | 10.77        |
| C26          | 20.87  | 30.00         | 187.8402°      | 10.77        |
| C27          | 20.87  | 30.00         | 187.8402°      | 10.77        |
| C28          | 20.87  | 30.00         | 187.8402°      | 10.77        |

**MORRIS**  
 ENGINEERING AND SURVEYING

617 N.W. 27th STREET  
 MOORE, OK 73160  
 (405) 912-2775  
 (405) 912-2322 FAX  
 CA 3549, EXP. 6-30-07

REGISTERED PROFESSIONAL ENGINEER  
 ROSS C. MORRIS  
 16837  
 OKLAHOMA

SCALE 1"=100'  
 DATE \_\_\_\_\_  
 ENGINEER \_\_\_\_\_