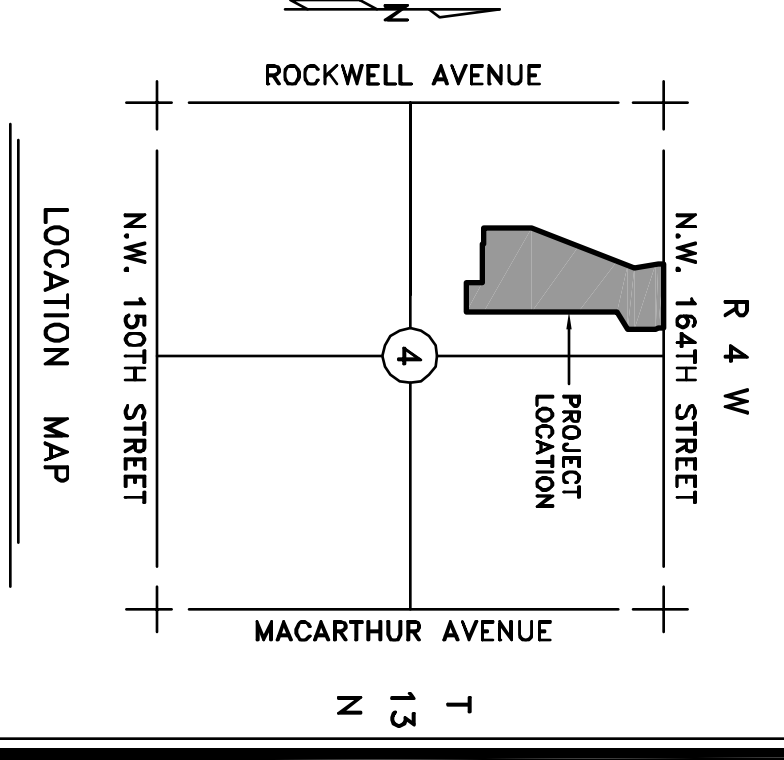
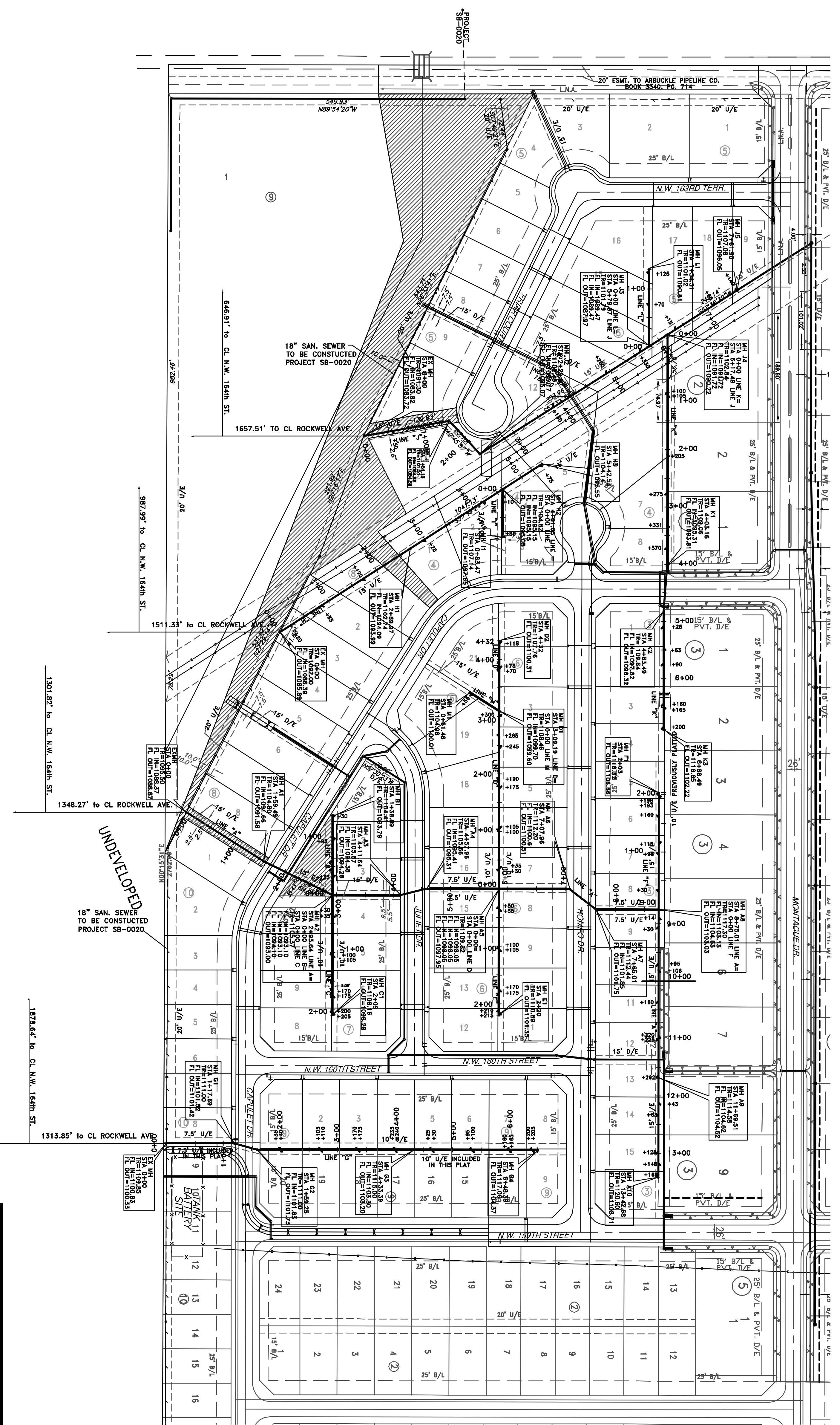


SANITARY GENERAL LAYOUT
MONTAGUE, SEC. 2
 TO SERVE
CITY OF OKLAHOMA CITY, OKLAHOMA COUNTY, OKLAHOMA

THE CITY
OF
OKLAHOMA CITY



SCALE: 1"=100'

MORRIS
 ENGINEERING AND SURVEYING
 617 N.W. 27th STREET
 MOORE, OK 73160
 (405) 912-2775
 (405) 912-2322 FAX
 CA 3549, EXP. 6-30-07
 ENGINEER

