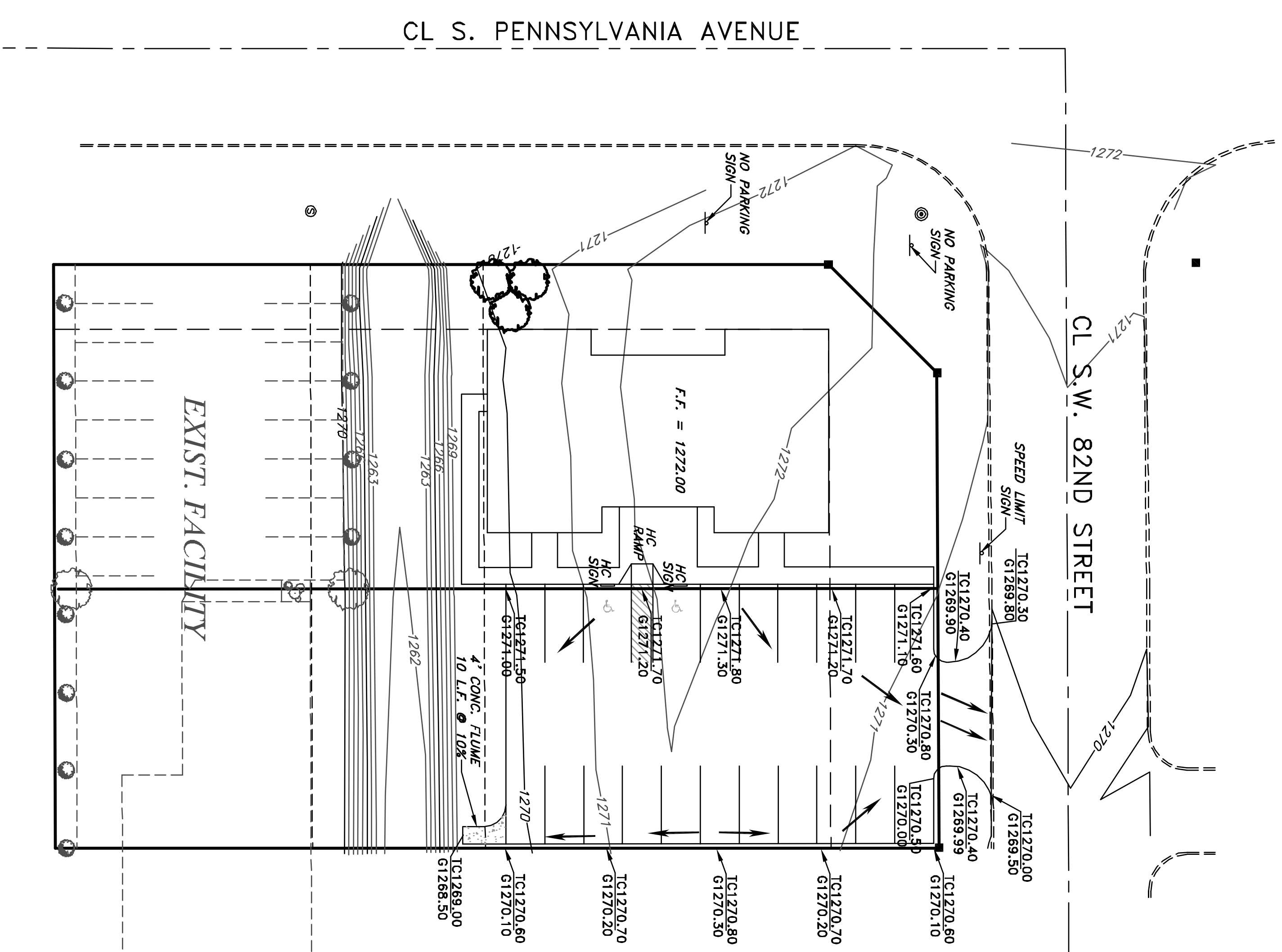
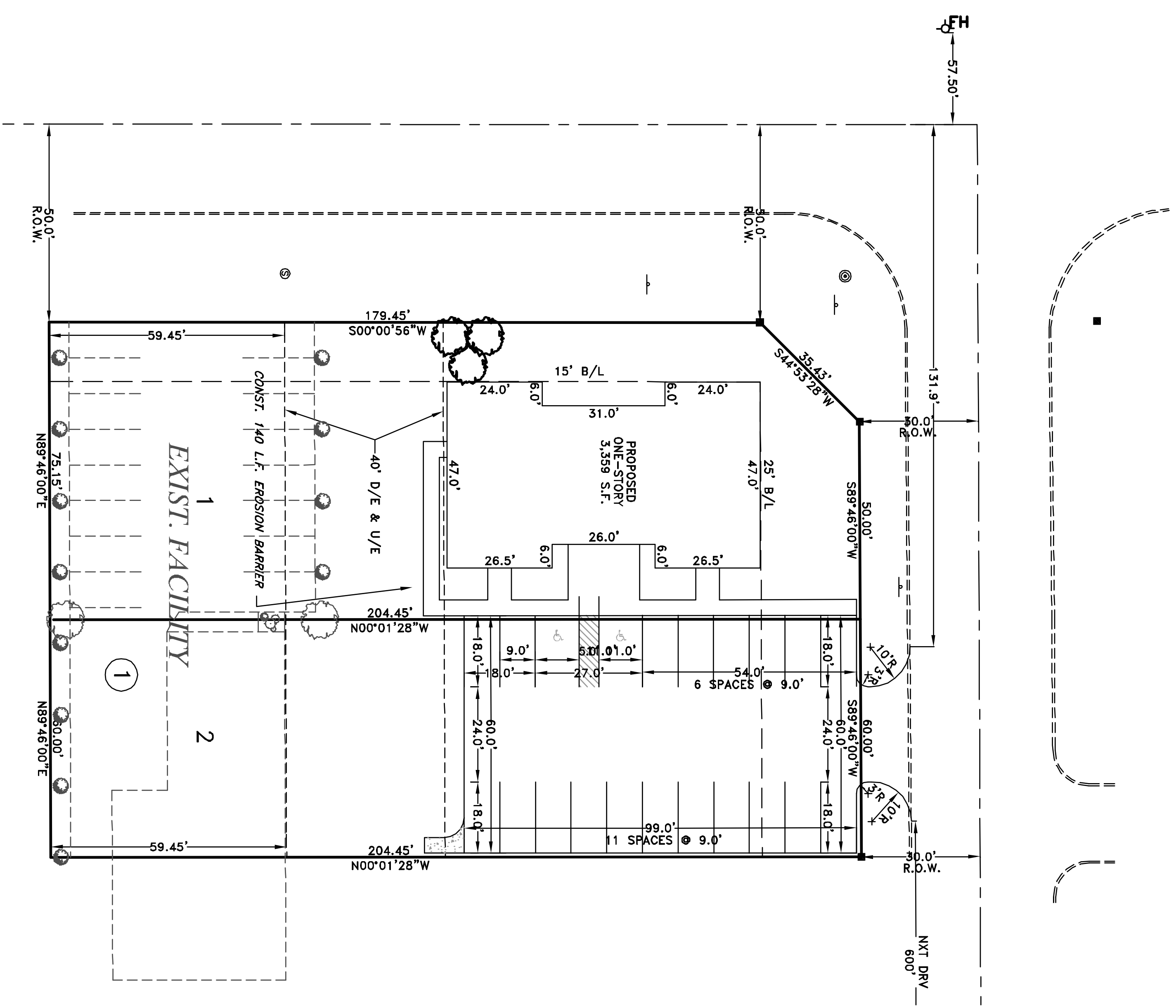


SITE & GRADING PLAN

TO SERVE

THE PREGNANCY CENTER

A PART OF THE SW/4, SEC. 32, T11N, R3W, IM
CITY OF OKLAHOMA CITY, OKLAHOMA COUNTY, OKLAHOMA



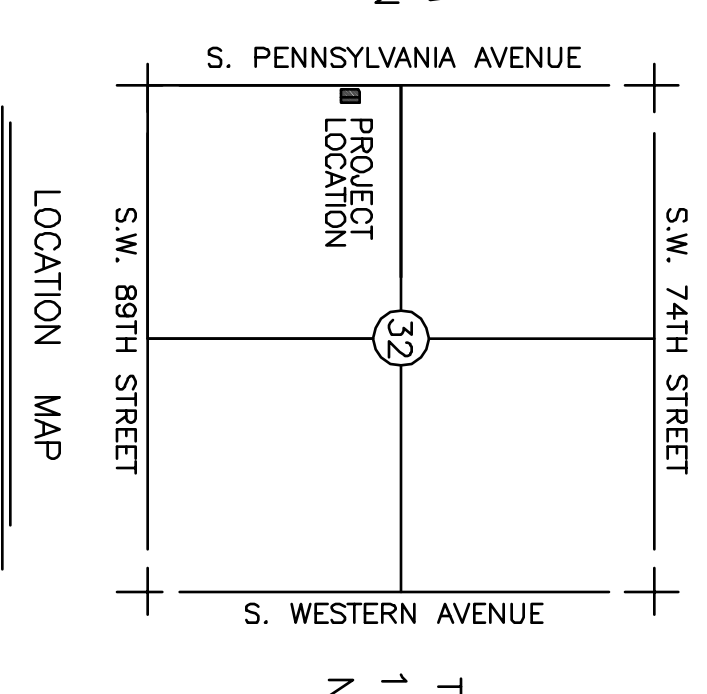
NOTE: DETENTION SHALL BE FEE IN LIEU OF DETENTION, PER ADHIR AGRAWAL, DRAINAGE ENGINEER.

LEGAL DESCRIPTION
LOTS 1 AND 2, BLOCK 1, ANTON ESTATES, AN ADDITION TO THE CITY OF OKLAHOMA, OKLAHOMA COUNTY, OKLAHOMA, ACCORDING TO THE RECORDED PLAT THEREOF, OTHERWISE KNOWN AS 1624 S.W. 82ND STREET.

LEGEND

- SS— SANITARY SEWER LINE
- W— WATER LINE
- OE— OVERHEAD ELECTRIC
- G— EXISTING GAS SERVICE
- ⊖ SANITARY SEWER MANHOLE
- ⊖ STORM SEWER MANHOLE
- ⊖ POWER POLE
- ⊖ GUY ANCHOR
- ⊖ LIGHT POLE
- ⊖ FIRE HYDRANT
- ⊖ WATER VALVE
- ⊖ WATER METER
- ⊖ GAS VALVE
- ⊖ GAS METER
- ⊖ EW⊖ ELECTRIC METER
- ⊖ TELEPHONE PEDestal
- ⊖ MONITOR WELL
- ⊖ SIGN
- ⊖ TRAFFIC SIGNAL POLE
- ⊖ TRAFFIC SIGNAL BOX
- *— FENCE
- ⊖ SET IRON PIN
- ⊖ FOUND IRON PIN
- ⊖ BENCHMARK

SCALE: 1"=20'



SITE PLAN

GRADING PLAN

SITE & GRADING PLAN THE PREGNANCY CENTER

MORRIS
ENGINEERS AND SURVEYORS
617 N.W. 27th STREET
MOORE, OK 73160
(405) 913-2775
(405) 913-2322 FAX
CA 3549, Exp. 6-30-07

