

WATER GENERAL LAYOUT

TO SERVE

SUBURBAN ESTATES, SECTION 1

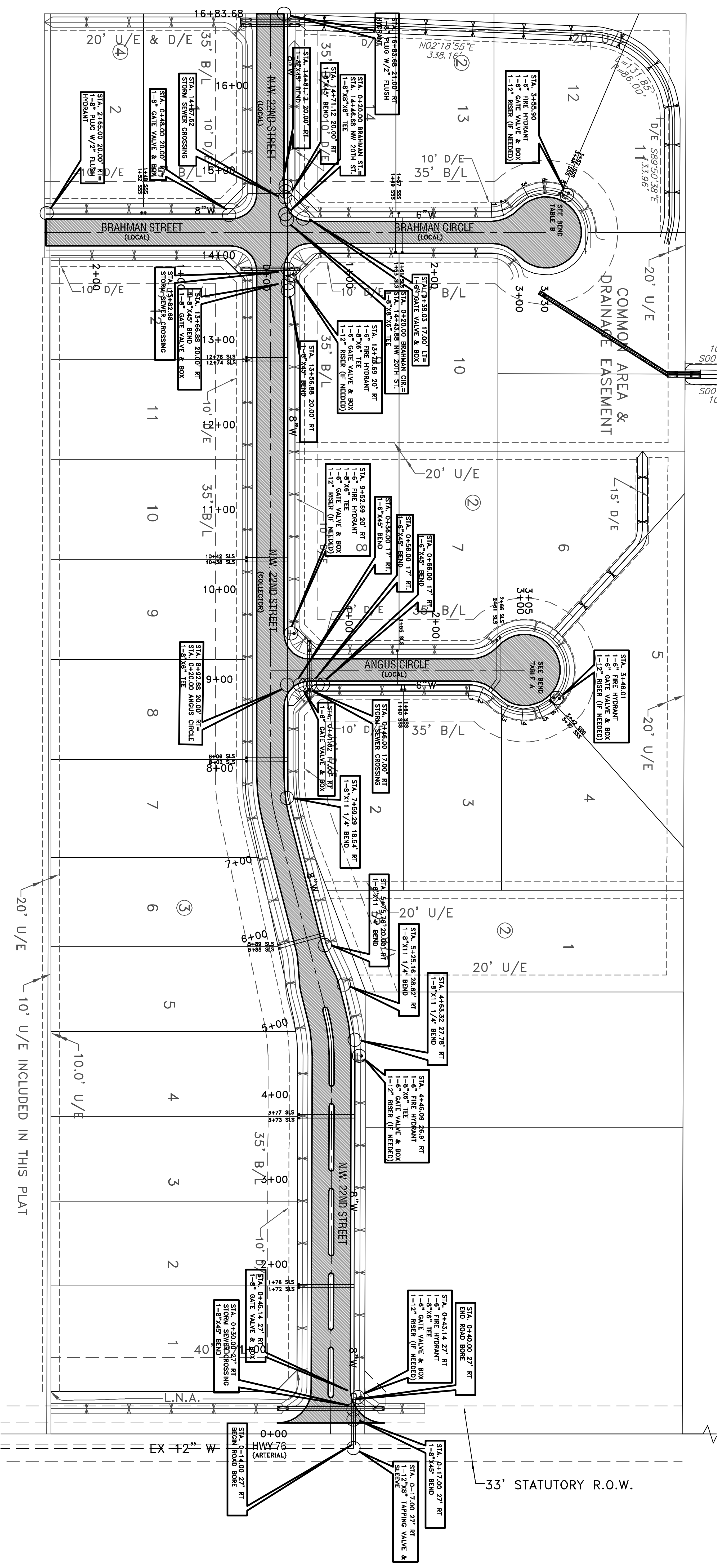
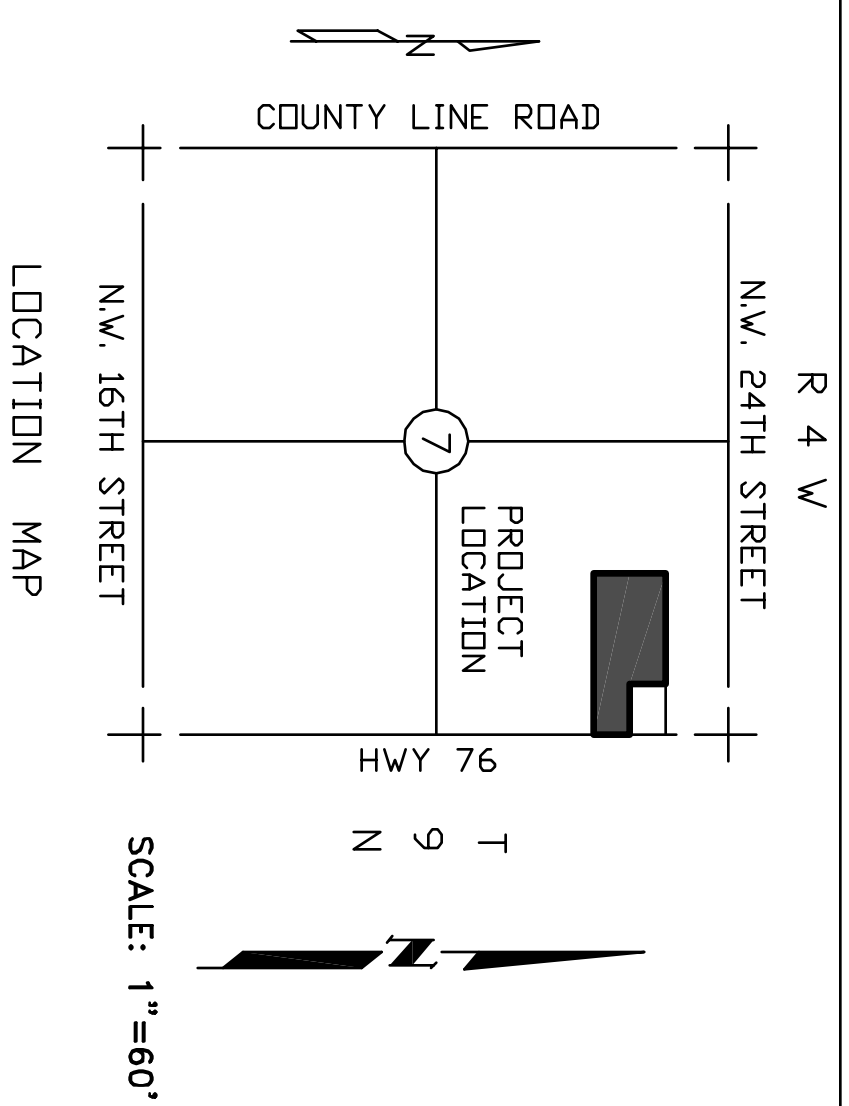
A PART OF THE NE/4, SEC. 7-T9N-R4W, I.M.

THE CITY

OF

NEWCASTLE

CITY OF NEWCASTLE, McCLAIN COUNTY, OKLAHOMA



BEND TABLE A		BEND TABLE B	
1. 2+35.83	4.00' RT	1. 8+41.1	1/2" BEND
2. 2+77.39	4.00' LT	2. 8+42.2	1/2" BEND
3. 2+80.21	3.97' RT	3. 8+42.2	1/2" BEND
4. 3+06.58	4.00' RT	4. 8+42.2	1/2" BEND
5. 3+38.24	3.87' RT	5. 8+42.2	1/2" BEND
6. 3+38.24	3.87' RT	6. 8+42.2	1/2" BEND

617 N.W. 27th STREET
MOORE, OK 73160
(405) 912-2775
(405) 912-2322 FAX
CA. 3549, EXP. 6-30-07

REGISTERED PROFESSIONAL ENGINEER
ROSS C MORRIS
16837