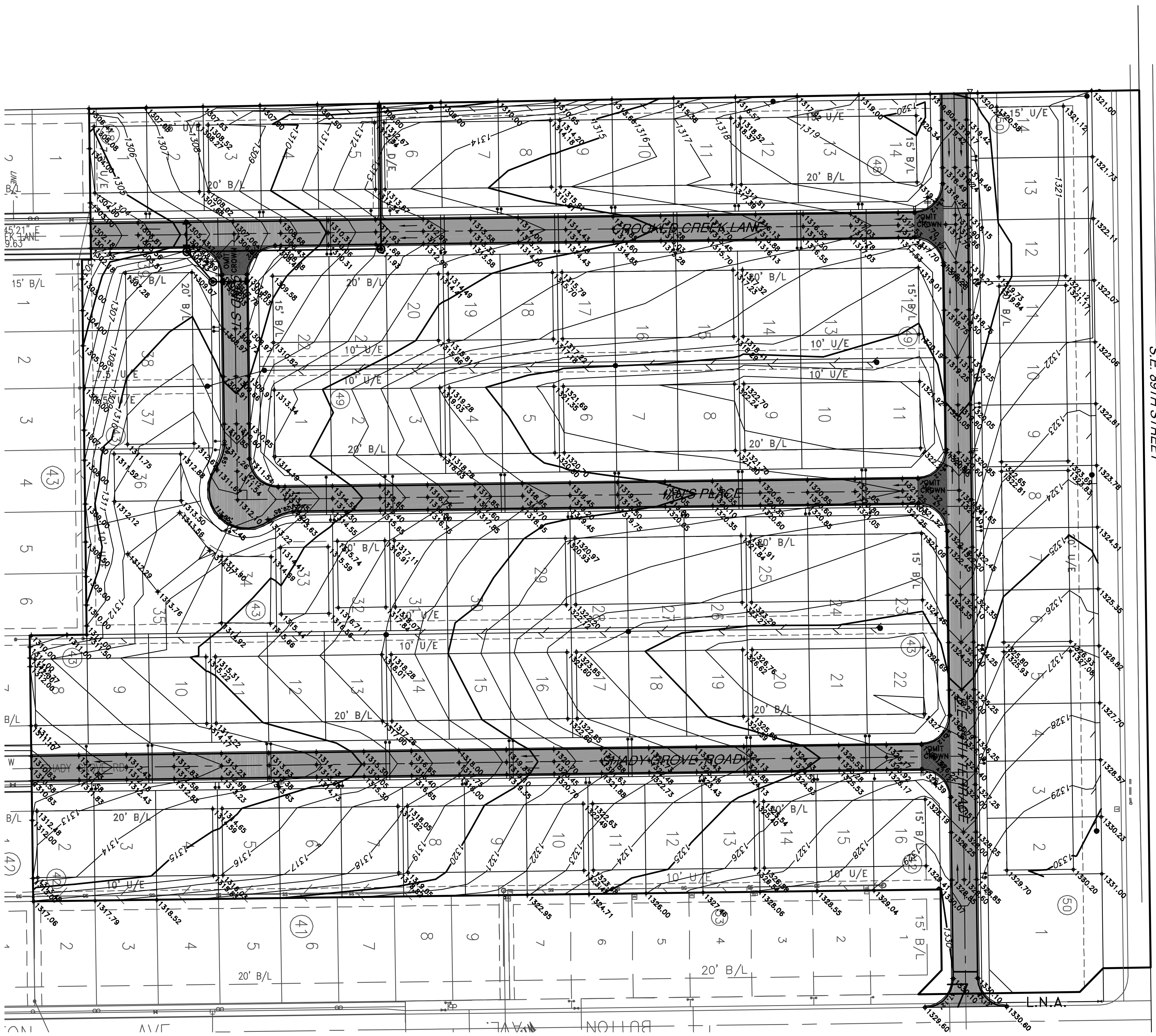


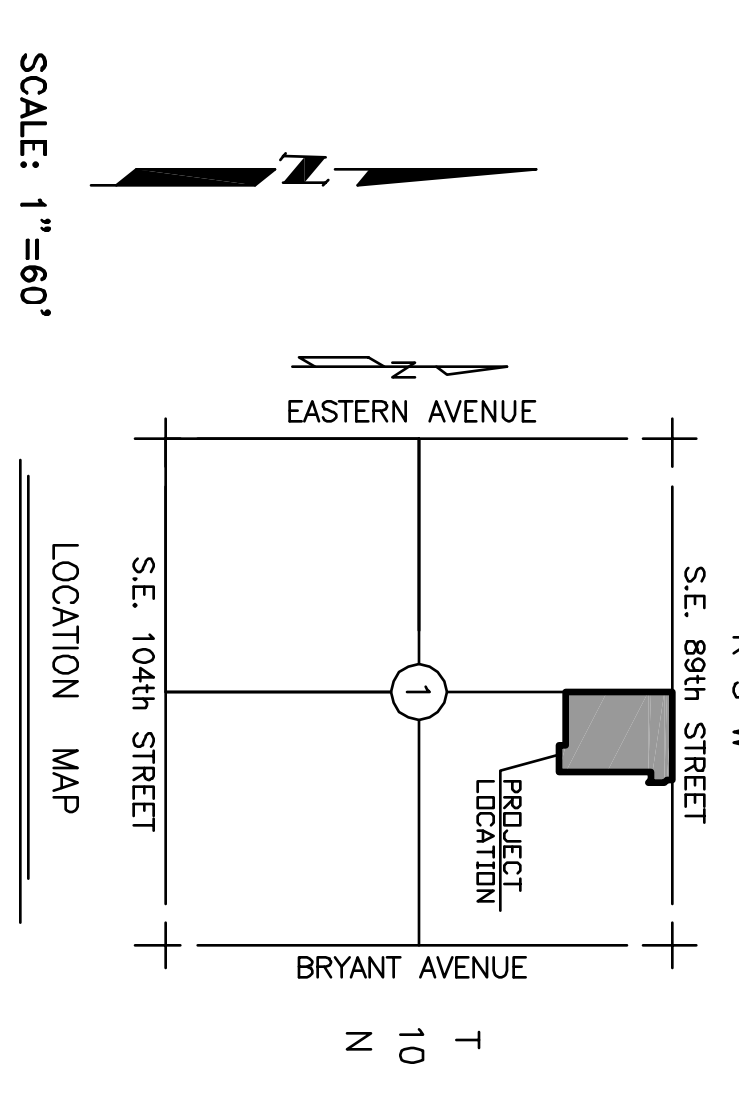
SITE & GRADING PLAN

TO SERVE

WINFIELD II ADDITION, SECTION EIGHT A PART OF THE NE4, SECTION 1, T10N, R3W, I.M. CITY OF OKLAHOMA CITY, CLEVELAND COUNTY, OKLAHOMA



LEGEND	
—SS—	SANITARY SEWER LINE
—W—	WATER LINE
—GHE—	OVERHEAD ELECTRIC
—E—	EXISTING GAS SERVICE
⊙	SANITARY SEWER MANHOLE
⊙	STORM SEWER MANHOLE
⊙	POWER POLE
⊙	GUY ANCHOR
⊙	LIGHT POLE
⊙	FIRE HYDRANT
⊙	WATER VALVE
⊙	WATER METER
⊙	GAS VALVE
⊙	GAS METER
⊙	ELECTRIC METER
⊙	TELEPHONE PEDESTAL
⊙	MONITOR WELL
⊙	SIGN
⊙	TRAFFIC SIGNAL POLE
⊙	TRAFFIC SIGNAL BOX
—X—	FENCE
•	SET IRON PIN
•	FOUND IRON PIN
•	BENCHMARK
—1305—	PROPOSED CONTOUR INDEX



NOTE:
PAVING SHALL BE CONSTRUCTED IN ACCORDANCE WITH:
TYPICAL SECTION 110 FOR ASPHALTIC PAVING
-OR-
TYPICAL SECTION 210 FOR CONCRETE PAVING

MORRIS
ENGINEERS AND SURVEYORS

617 N.W. 27th STREET
MOORE, OK 73160
(405) 913-2775
(405) 913-2322 FAX
CA 3549, Exp. 6-30-07

REGISTERED PROFESSIONAL ENGINEER
ROSS C MORRIS
16837